

ACTIVE GUARD

REAL TIME GUARD TOUR SYSTEM

Reduce cost of guard supervision

Replaces:

- communication radio systems
- panic button pilot and radio-line
- contact phone
- passive tour systems
- reduces car patrols of guard supervisors



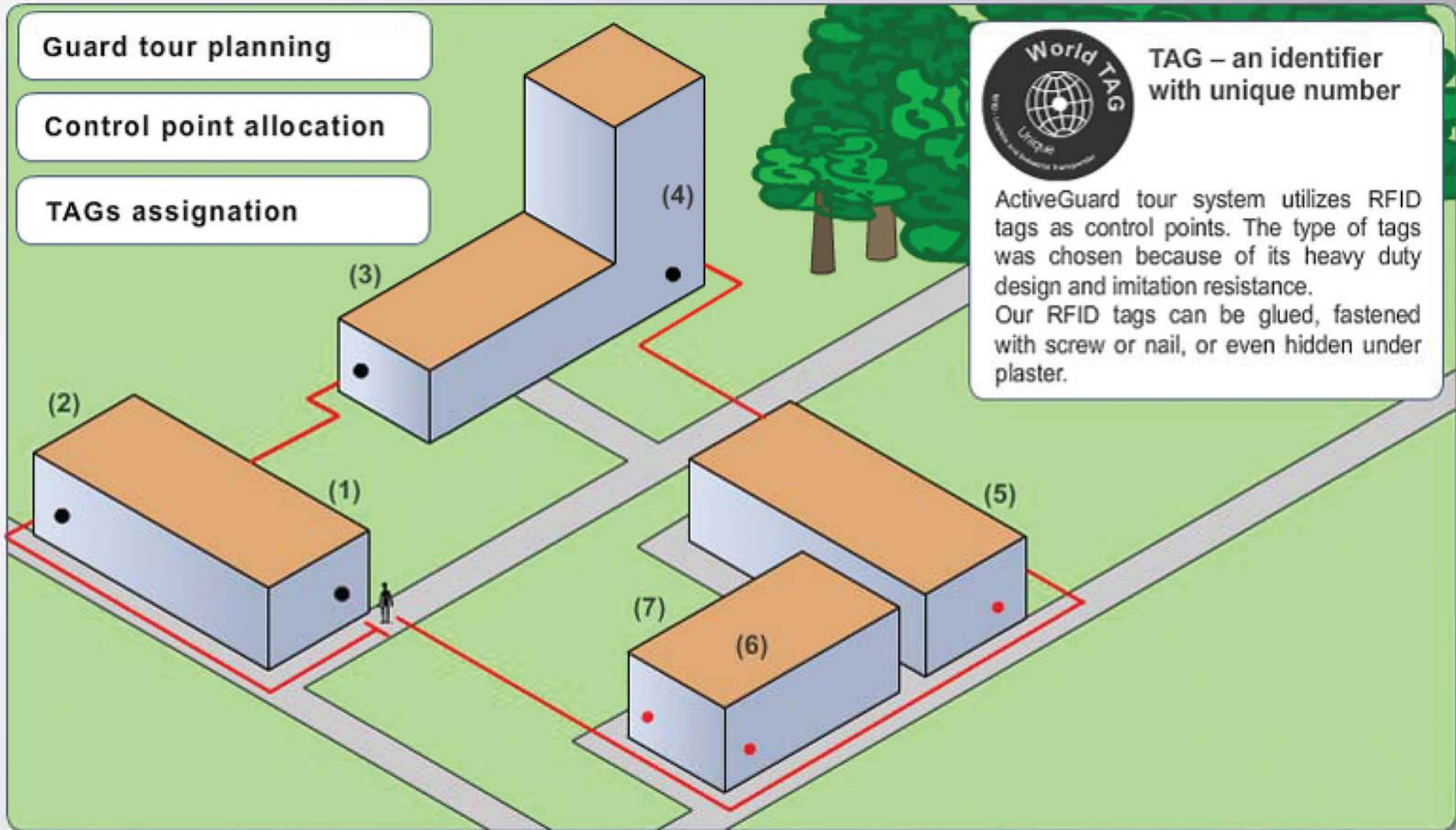
TRINITY
ENABLING YOUR WIRELESS WORLD

Location monitored with ActiveGuard

Guard tour planning

Control point allocation

TAGs assignation



TAG – an identifier with unique number

ActiveGuard tour system utilizes RFID tags as control points. The type of tags was chosen because of its heavy duty design and imitation resistance. Our RFID tags can be glued, fastened with screw or nail, or even hidden under plaster.

How does the ActiveGuard work

ActiveGuard wand (recorder) is equipped with RFID reader for tags (control points) registration.

The tags' id-codes are encrypted and immediately sent to monitoring center using GSM network via GPRS or SMS.

Help is called by pushing the PANIC BUTTON. Another button is used for voice connection calling.



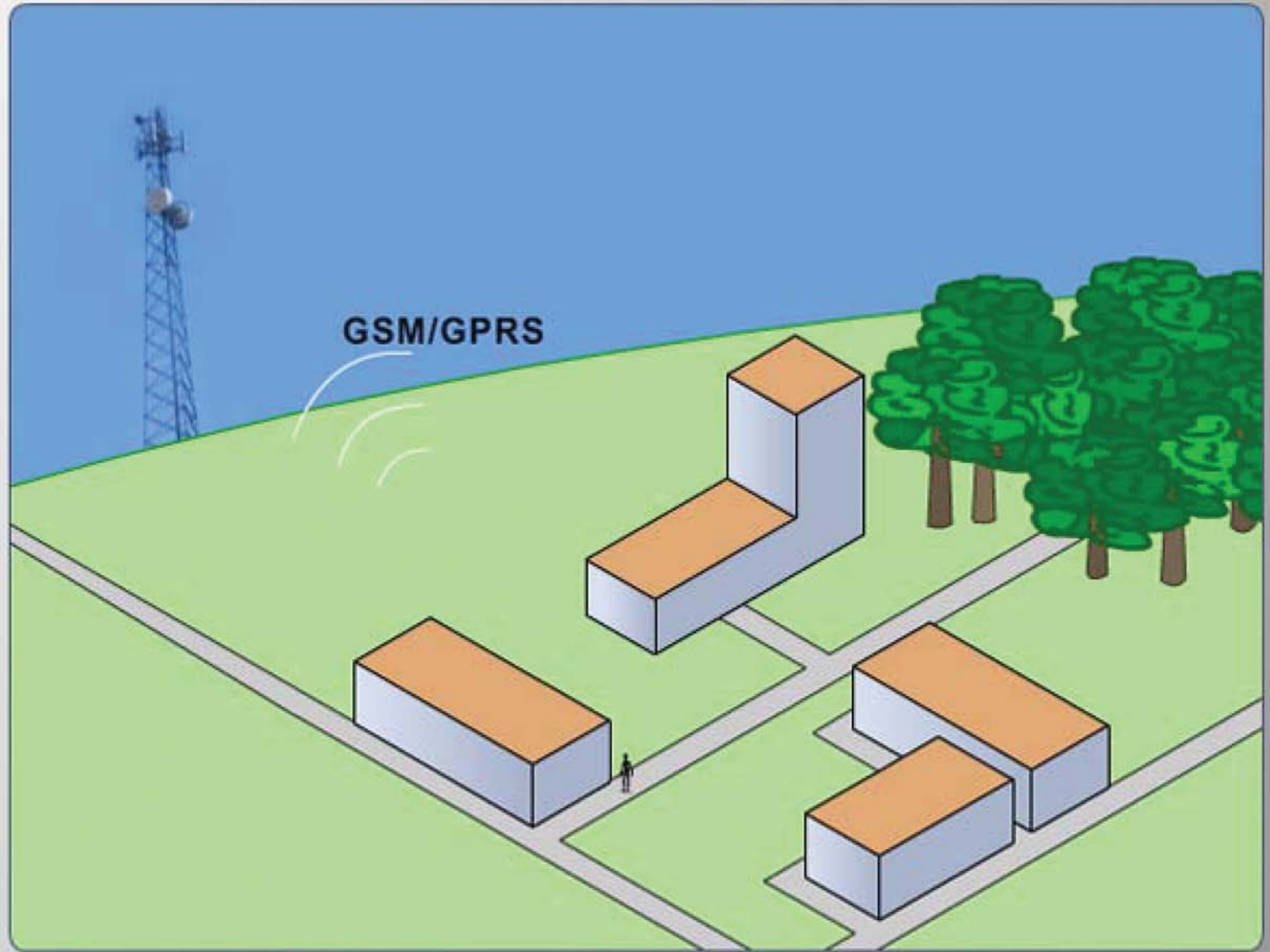
How does the ActiveGuard work

ActiveGuard wand (recorder) is equipped with RFID reader for tags (control points) registration.

The tags' id-codes are encrypted and immediately sent to monitoring center using GSM network via GPRS or SMS.

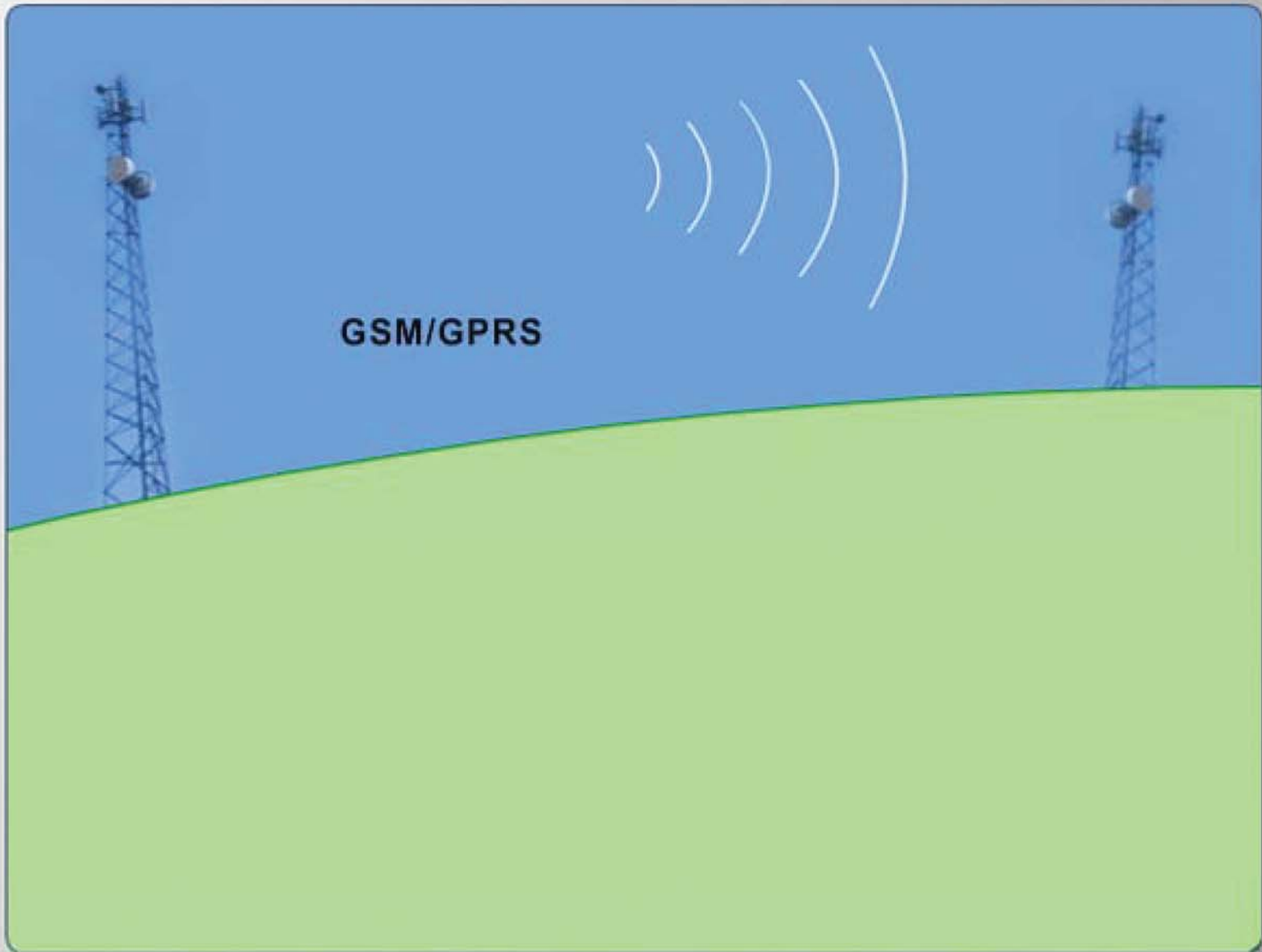
Help is called by pushing the PANIC BUTTON. Another button is used for voice connection calling.





Simple and functional software for guard tour monitoring:

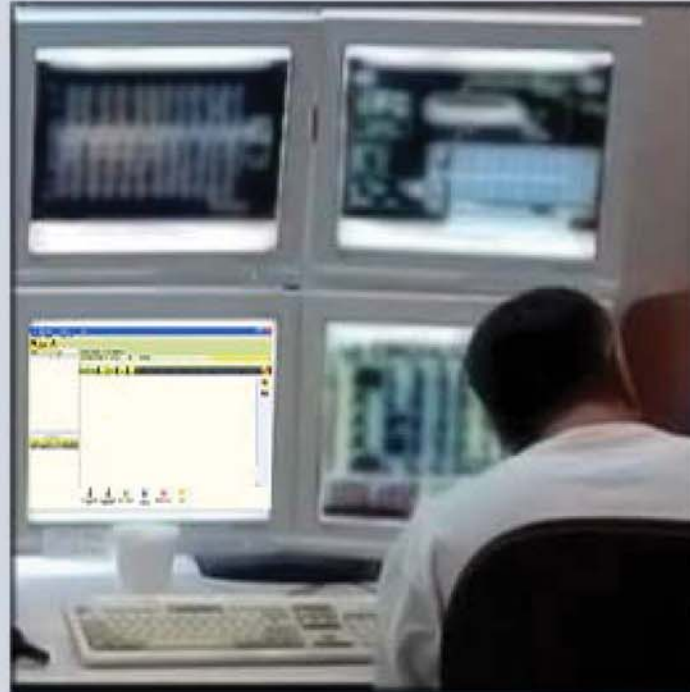
- guard tour visualization
- present guard location
- time gates for control points
- functional database assigned to monitored location
- phone calls and SMS from software level
- intuitive event handling
- remote wand configuration
- anti-sabotage mechanisms
- one wand - many guarding tours
- high system test frequency
- reporting mechanisms
- easier working hours reporting



MONITORING CENTER

Simple and functional software for guard tour monitoring:

- guard tour visualization
- present guard location
- time gates for control points
- functional database assigned to monitored location
- phone calls and SMS from software level
- intuitive event handling
- remote wand configuration
- anti-sabotage mechanisms
- one wand - many guarding tours
- high system test frequency
- reporting mechanisms
- easier working hours reporting



Simple and functional software for guard tour monitoring:

- guard tour visualization
- present guard location
- time gates for control points
- functional database assigned to monitored location
- phone calls and SMS from software level
- intuitive event handling
- remote wand configuration
- anti-sabotage mechanisms
- one wand - many guarding tours
- high system test frequency
- reporting mechanisms
- easier working hours reporting

MONITORING CENTER

ActiveGuard LT Monitor 2.0 - next

Program Konfiguracja Narzędzia

Staż: Alarm Data urządzenia: Edytor danych

Nowe: 2 000000 2006-10-24 16:38:53 Urządzenie: 000000 Telefon

00:12 Point 08 Readout

Obsługiwane: 3

000000	2006-10-24 16:38:53 Urz
000101	Security Group
000102	Forum Hotel 2

Powiadomienie osoby Powiadomienie strażnika Alarm zasadny Alarm fałszywy Zakończenie Inne

Simple and functional software for guard tour monitoring:

- guard tour visualization
- present guard location
- time gates for control points
- functional database assigned to monitored location
- phone calls and SMS from software level
- intuitive event handling
- remote wand configuration
- anti-sabotage mechanisms
- one wand - many guarding tours
- high system test frequency
- reporting mechanisms
- easier working hours reporting

MONITORING CENTER

The screenshot shows the 'ActiveGuard LT Monitor 2.0 - next' application window. The main window has a menu bar with 'Program', 'Konfiguracja', and 'Sprawozdania'. Below the menu bar are icons for a phone, a wand, and a document. The main area displays 'Nazwa: 2' and '000000 2006-10-24 16:38:53 Urządzenie: 000000' with a 'Telefon' button. A central window titled 'ActiveGuard LT' shows 'Nazwa: Monitored location 0002335' and a table of time gates. The table has columns for 'Czas ...', 'Numer punktu', 'Opis', and 'Polozenie'. A callout box points to the table with the text 'Control signal recived inside of time gate'. The bottom of the window has a status bar with icons for 'Powiadomienie endy', 'Powiadomienie straznika', 'Alarm zasady', 'Alarm faktyczny', 'Zakończenie', and 'Zmie'.

Czas ...	Numer punktu	Opis	Polozenie
00:00 (-1;+1)	1	START – reception, building	
00:02 (-1;+1)	2	building A – western corner	
00:04 (-1;+1)	3	building B – corner	
00:07 (-2;+2)	4	building C – tower entrance	
00:12 (-3;+3)	5	building D – main entrance	
00:14 (-4;+4)	6	building E – emergency exit	
00:15 (-4;+4)	7	building E – main entrance	
00:20 (-4;+4)	8	END – reception, building A	

Control signal recived inside of time gate



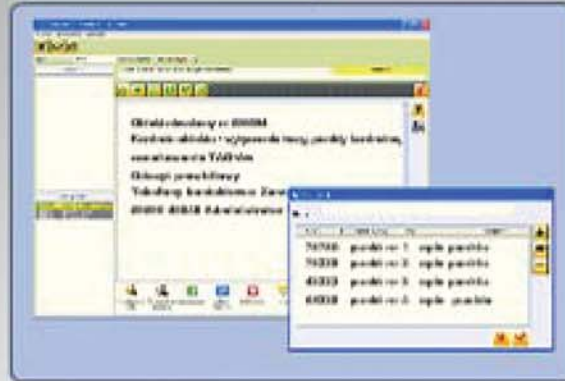
MODERN SOLUTION

- heavy duty design
- ergonomic shape
- sabotage proof
- functional software
- low maintenance cost
- wireless communication via GPRS and GSM
- no permission needed

REPLACES:

- communication radio systems
- panic button pilot and radio-line
- contact phone
- passive tour systems
- reduces car patrols of guard supervisors

Very simple and functional software



PANIC
calls for help

VOICE
asks monitoring center for voice connection

RFID
activates RFID reader



**ACTIVE
GUARD**

**FOR ENHANCED SECURITY
AND REDUCED COSTS**


TRINITY
ENABLING YOUR WIRELESS WORLD

www.trintel.co.za

